



**Graduating Student Survey
2021-22**

Response Rates by Gender

Gender	Graduates	Grads %	Respondents	Survey %	Resp Rate
Female	781	69.2%	344	76.3%	44.0%
Male	343	30.4%	105	23.3%	30.6%
Unknown	4	0.4%	2	0.4%	50.0%
Total	1,128	100.0%	451	100.0%	40.0%

Includes all respondents with 1+ questions completed. Some respondents may not have received awards in the Summer/Fall/Spring 2021-22 calendar year but were identified as probable completers. Down from 550 (43.1%) in 2020-21.

Response Rates by Race/Ethnicity

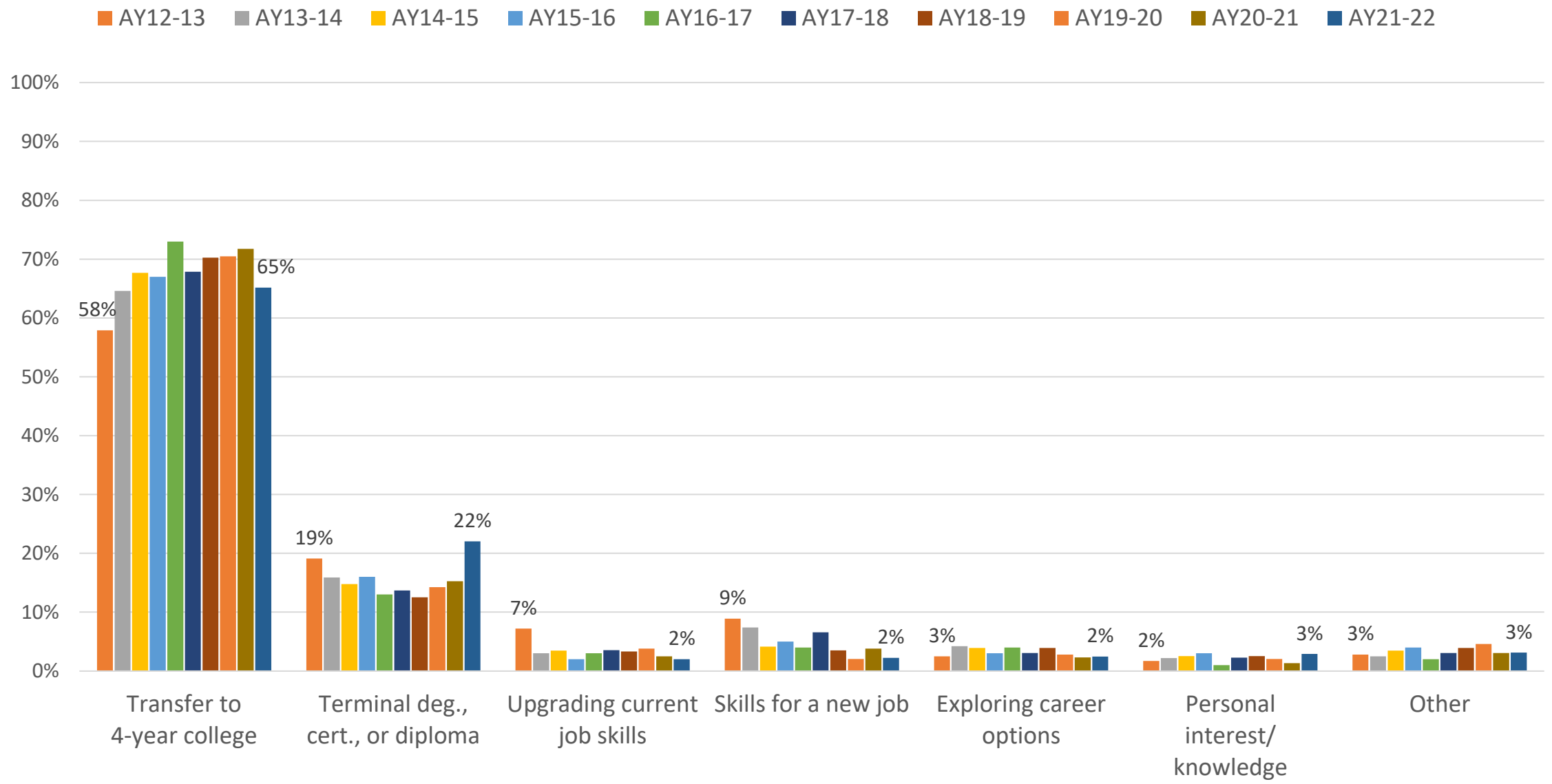
Race/Ethnicity	Graduates	Grads %	Respondents	Survey %	Resp Rate
White	873	75.5%	345	76.5%	39.5%
African American	35	3.1%	22	4.9%	62.9%
Hispanic	121	10.6%	53	11.8%	43.8%
Asian	17	1.9%	2	0.4%	11.8%
Native American	3	0.1%	1	0.2%	33.3%
Native Hawaii/P.I.	3	0.2%	1	0.2%	33.3%
Multiple	37	3.4%	20	4.4%	54.1%
Missing/Unknown	39	5.2%	7	1.6%	17.9%
Total	1,128	100.0%	451	100.0%	40.0%

Response Rates by 2021-22 Award

Award	Graduates	Grads %	Respondents	Survey %	Resp Rate
AA&S	445	31.8%	202	39.3%	45.4%
AAS	182	13.0%	105	20.4%	57.7%
AS	163	11.7%	79	15.4%	48.5%
CERT	321	24.7%	62	12.1%	19.3%
CSC	281	18.7%	66	12.8%	23.5%
Total	1,392	100.0%	514	100.0%	36.9%

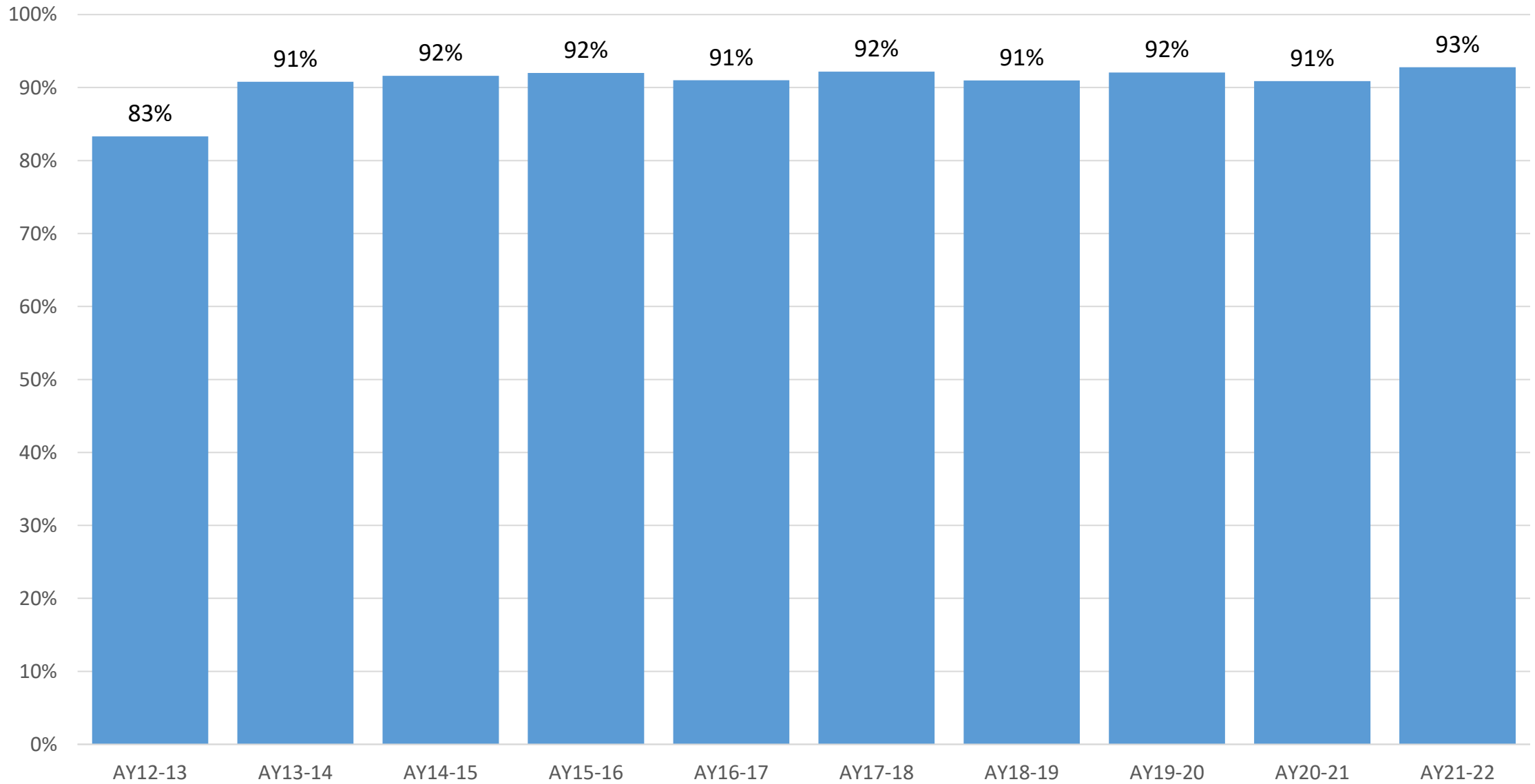
Some respondents received more than 1 award. Respondents without awards in 2021-22 are not included.

What Was Your Primary Goal in Enrolling at LFCC?

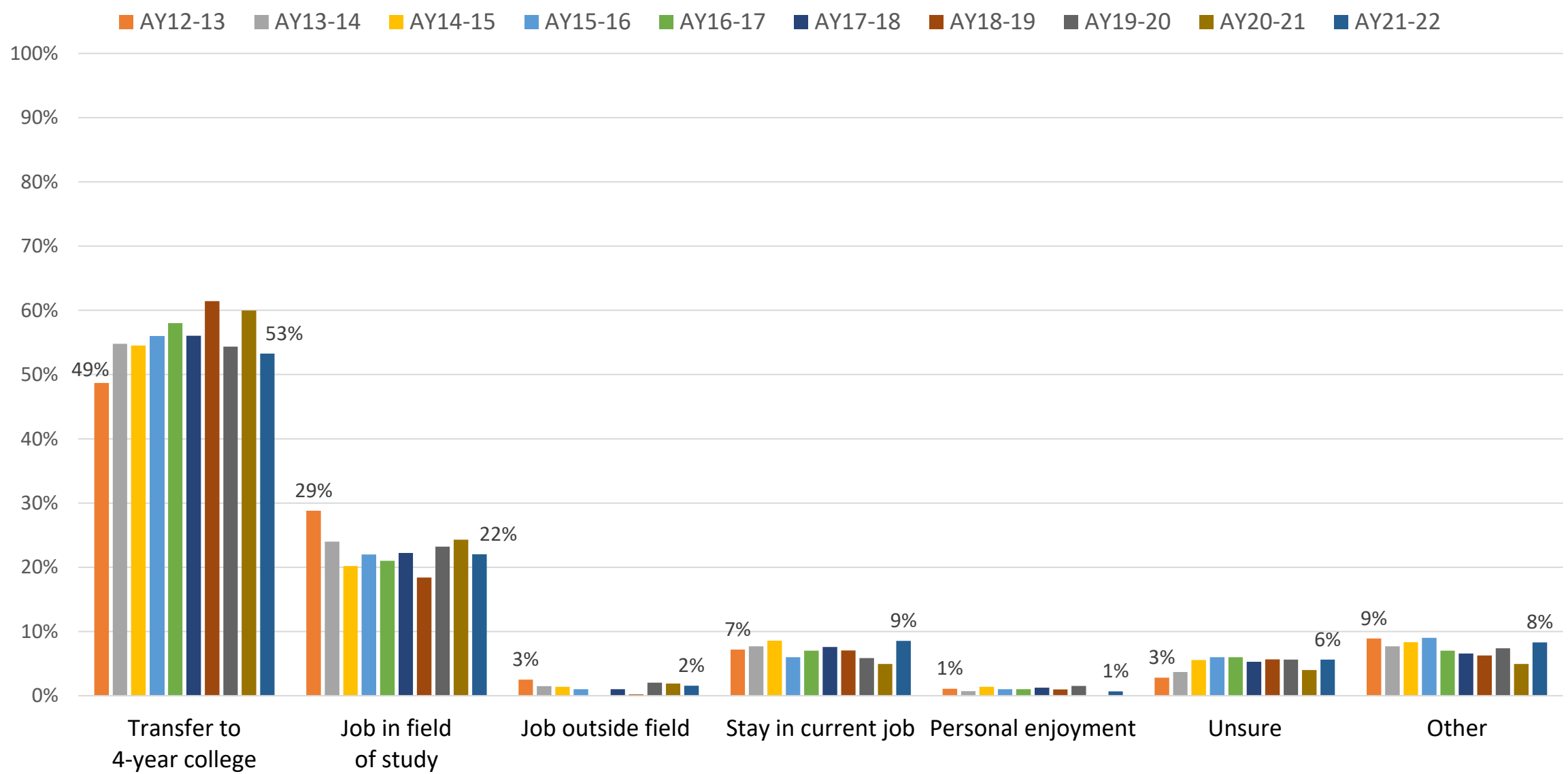


These questions reference LFCC. Next year, the Laurel Ridge name will be used.

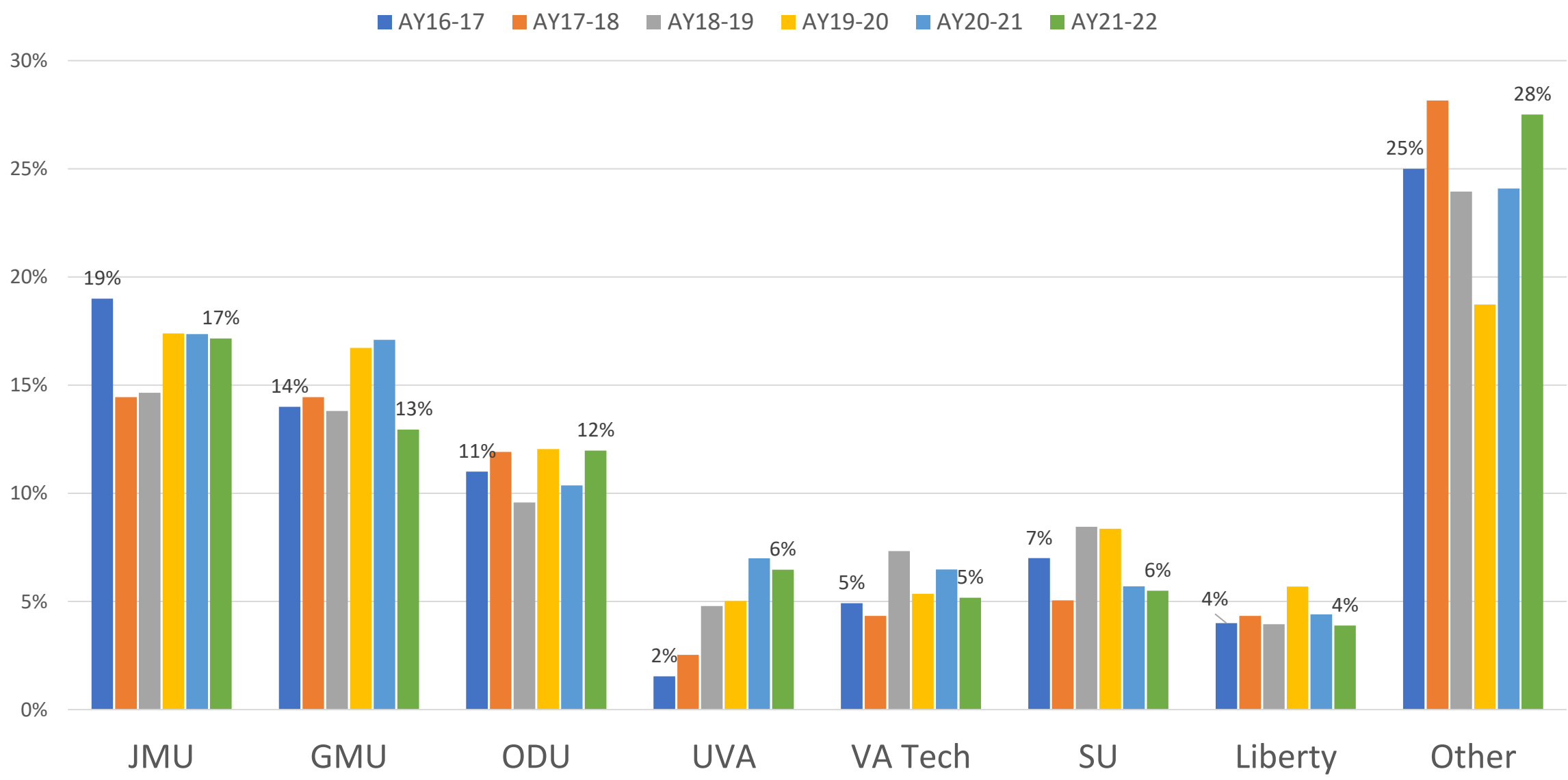
Have You Achieved Your Primary Goal?



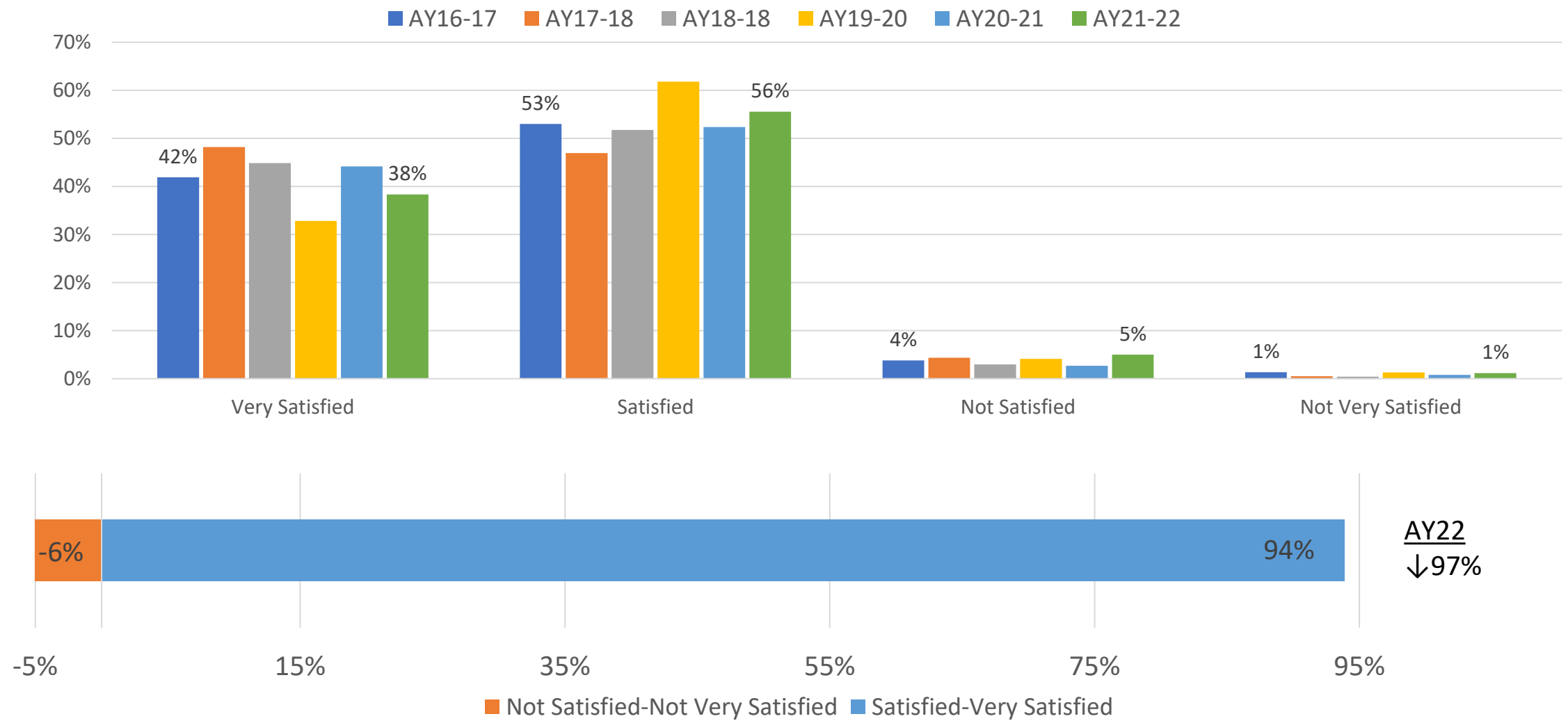
After Graduating from LFCC, What is Your Next Step?



If Transferring, Where Do You Plan to Attend?



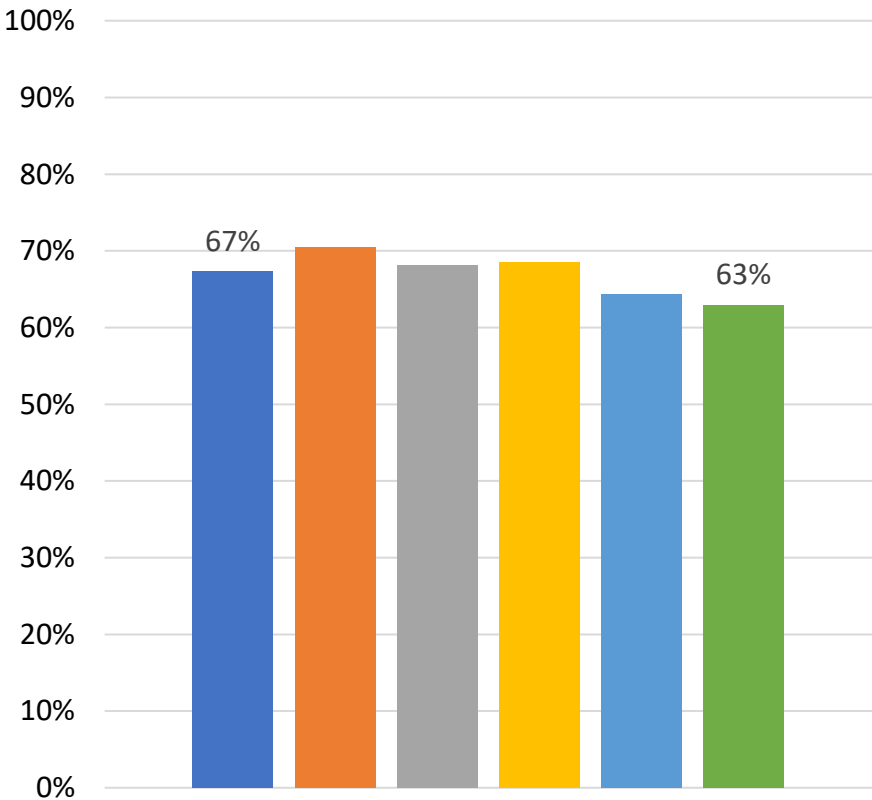
How Satisfied Are You That LFCC Prepared You for Employment/Transfer to a Four-Year College?



Do You Expect to Get a Job or Admission to the College of Your Choice Within 6 Months?

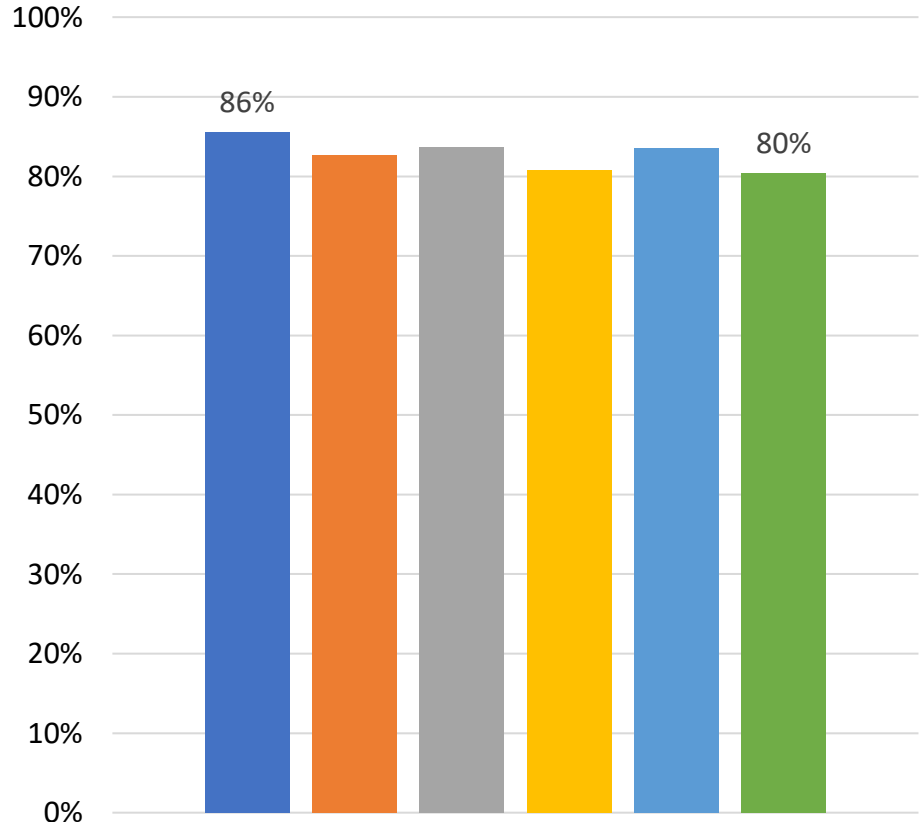
Expect to get a job in major field

■ AY16-17 ■ AY17-18 ■ AY18-19 ■ AY19-20 ■ AY20-21 ■ AY21-22

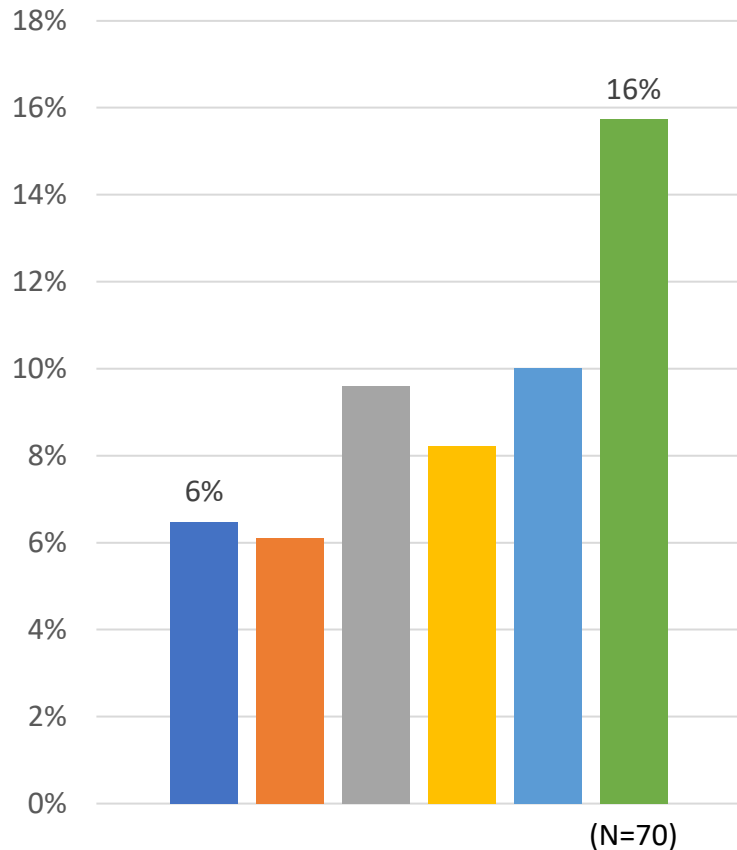


Expect admission to desired college

■ AY 2016-17 ■ AY17-18 ■ AY18-19 ■ AY19-20 ■ AY20-21 ■ AY21-22



Earned Industry Credentials Besides a Credit Degree or Certificate from LFCC



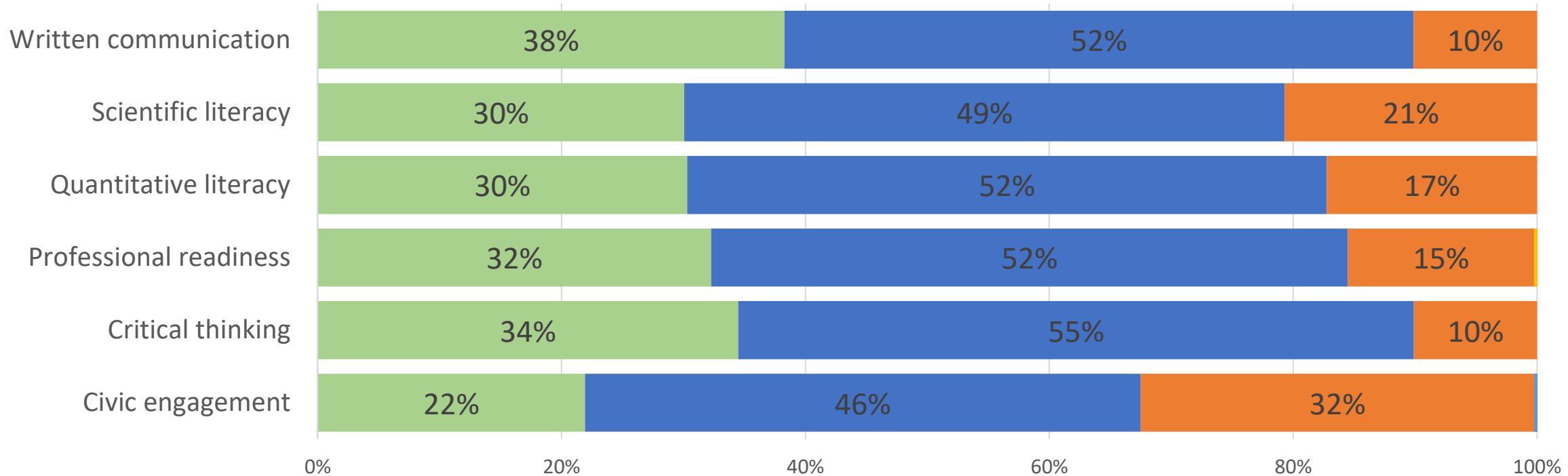
Sample of Industry Credentials

Credential	Provider
CCMA (7)	Workforce Solutions
Phlebotomy (6)	Workforce Solutions
Basic Life Support (3)	American Heart Association
CNA (2)	Workforce Solutions
Mandated Reporter Certificate (2)	Virginia Department of Social Services
ABM trained	CARD (current job)
CDL	Workforce Solutions
CNA	State of Virginia
Cosmetology license	Virginia State Board
CPC-A	AAPC
CPR Certification	VA Social Services and current employer
Dental radiation	Workforce Solutions
Dyslexia Awareness Certificate	EDU 200, Lori Killough
I-CAR	
MAT trained	CARD
NREMT- P	NOVA
Pharmacy Technician	Workforce Solutions
Quick books online	
Real Estate License	
Salesperson license	DMVDB
Use of Restraint and Seclusion in Elementary and Secondary Education	EDU 200, Lori Killough
Virginia Master Naturalist	Virginia Tech

■ AY16-17 ■ AY17-18 ■ AY18-19 ■ AY19-20 ■ AY20-21 ■ AY21-22

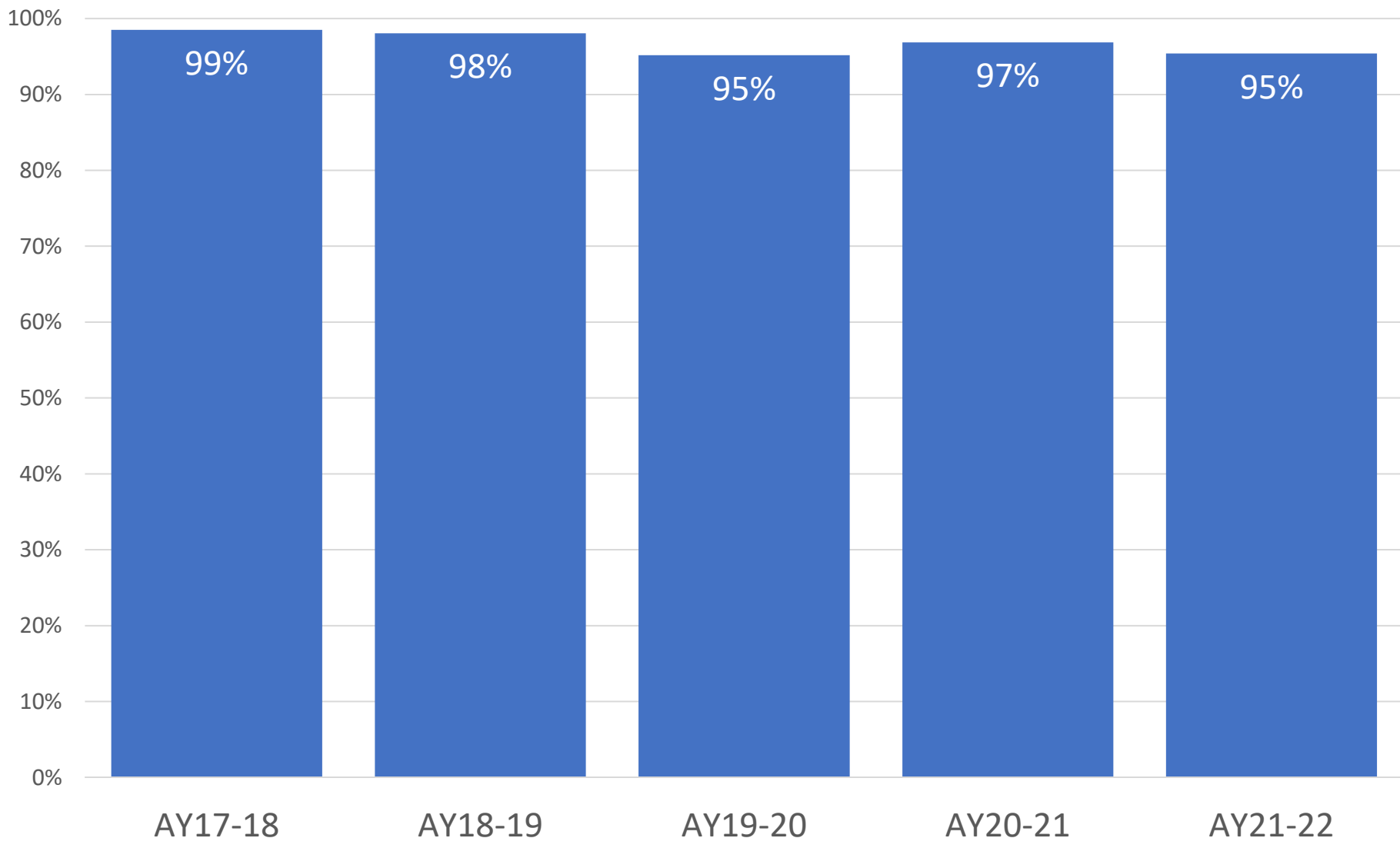
2021-22 Ratings of Change in General Education Competencies Compared to When They Started LFCC

■ Much stronger
 ■ Stronger
 ■ No change
 ■ Weaker
 ■ Much weaker



	Civic engagement	Critical thinking	Professional readiness	Quantitative literacy	Scientific literacy	Written communication
■ Much stronger	22%	34%	32%	30%	30%	38%
■ Stronger	46%	55%	52%	52%	49%	52%
■ No change	32%	10%	15%	17%	21%	10%
■ Weaker	0%	0%	0%	0%	0%	0%
■ Much weaker	0%	0%	0%	0%	0%	0%

Would you recommend LFCC to others? (% Yes)



Questions?

John Milam

jmilam@laurelridge.edu

*Thanks to RADS Office for
survey support*