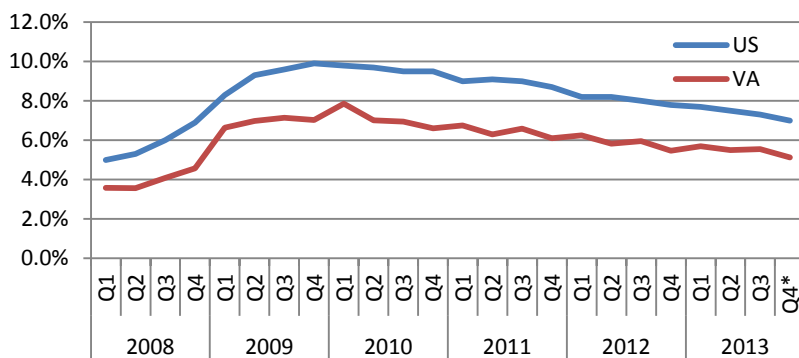


**RATES OF QUARTERLY EMPLOYMENT AND WAGES EARNED FOR SPRING 2010 EXITERS
IN SIX MONTHS AND TWO YEARS, WITH ONE- AND TWO-YEAR RETENTION RATES**

| College | Exiters | Quarterly Employment Rates and Median Wages for Spring 2010 Exiters | | | | | | Employed in Spring 2010 N | Employed in Spring 2010 and Retained Employment | |
|----------------------|---------------|--|------------------|-----------------|----------------|------------------|-----------------|---|---|-----------------|
| | | Spring 2010 | In Six Months | In Two Years | Spring 2010 | In Six Months | In Two Years | | In One Year | In Two Years |
| | | % | % | % | Median | Median | Median | | % | % |
| Blue Ridge | 1,294 | 72 | 70 | 68 | \$3,200 | \$4,400 | \$5,100 | 935 | 73 | 62 |
| Central Virginia | 1,366 | 71 | 74 | 72 | \$3,700 | \$4,700 | \$5,500 | 972 | 78 | 65 |
| Dabney S. Lancaster | 373 | 73 | 72 | 68 | \$2,900 | \$4,600 | \$4,600 | 273 | 67 | 58 |
| Danville | 1,229 | 55 | 58 | 59 | \$2,700 | \$3,700 | \$4,500 | 677 | 66 | 51 |
| Eastern Shore | 321 | 67 | 65 | 60 | \$2,700 | \$4,200 | \$4,100 | 215 | 59 | 46 |
| Germanna | 1,946 | 71 | 70 | 63 | \$3,800 | \$4,500 | \$5,500 | 1,376 | 72 | 58 |
| J. Sargeant Reynolds | 4,175 | 71 | 72 | 70 | \$4,100 | \$4,900 | \$5,600 | 2,968 | 76 | 64 |
| John Tyler | 2,221 | 69 | 69 | 67 | \$3,800 | \$5,000 | \$5,700 | 1,523 | 74 | 62 |
| Lord Fairfax | 1,639 | 70 | 70 | 64 | \$3,400 | \$4,600 | \$5,500 | 1,151 | 72 | 58 |
| Mountain Empire | 855 | 56 | 56 | 53 | \$2,900 | \$3,800 | \$4,400 | 480 | 67 | 49 |
| New River | 1,270 | 65 | 70 | 68 | \$2,900 | \$4,000 | \$4,800 | 826 | 71 | 61 |
| Northern Virginia | 13,265 | 61 | 61 | 53 | \$5,200 | \$6,300 | \$6,900 | 8,148 | 68 | 55 |
| Patrick Henry | 1,038 | 58 | 66 | 61 | \$3,200 | \$3,900 | \$4,400 | 599 | 74 | 57 |
| Paul D. Camp | 547 | 66 | 65 | 65 | \$3,100 | \$4,100 | \$4,800 | 360 | 71 | 61 |
| Piedmont Virginia | 1,346 | 71 | 71 | 69 | \$3,600 | \$4,900 | \$5,700 | 956 | 75 | 62 |
| Rappahannock | 741 | 68 | 69 | 66 | \$3,200 | \$4,100 | \$4,900 | 504 | 72 | 59 |
| Southside Virginia | 1,602 | 60 | 65 | 64 | \$2,900 | \$3,900 | \$4,600 | 958 | 71 | 58 |
| Southwest Virginia | 1,257 | 57 | 62 | 56 | \$3,600 | \$4,400 | \$5,200 | 715 | 70 | 54 |
| Thomas Nelson | 3,154 | 65 | 62 | 60 | \$3,700 | \$4,700 | \$5,100 | 2,044 | 68 | 57 |
| Tidewater | 10,290 | 63 | 61 | 58 | \$3,800 | \$4,500 | \$5,100 | 6,466 | 71 | 57 |
| Virginia Highlands | 665 | 58 | 58 | 57 | \$2,800 | \$4,400 | \$4,400 | 383 | 67 | 53 |
| Virginia Western | 2,024 | 72 | 73 | 71 | \$3,500 | \$4,800 | \$5,200 | 1,450 | 75 | 63 |
| Wytheville | 971 | 62 | 65 | 68 | \$3,300 | \$4,700 | \$5,400 | 603 | 75 | 68 |
| VCCS Total | 53,589 | 65 | 65 | 61 | \$3,800 | \$4,800 | \$5,400 | 34,582 | 71 | 58 |

United States and Virginia Unemployment Rates, 2008-2013



Source: Bureau of Labor Statistics. * - Q4 of 2013 based on preliminary data

Previous Research

Information on students' placement and wage information was previously produced in Student Success Snapshot #12: An Initial View of Student Success in the Workforce (February 2010).

- Visit <http://www.vccs.edu/studentsuccess> to learn more about student success.

How Were Data Generated?

CRT tables were used to produce demographic and enrollment data. Graduate files were used to determine graduation information. National Student Clearinghouse data were used to determine enrollment in higher education. Unemployment Insurance (UI) wage data from the Virginia Employment Commission were matched to VCCS student files to provide employment rates and wage calculations.